



Installation instruction for external roller shutters in:
UNDER PLASTER **SP-E** ADAPTING SYSTEM with **MOSKITO**

The content of the technical documentation is protected in accordance with the act dated on 4th February 1994 regarding Copyright and Related Rights (Journal of Laws of 2006 No. 90, item. 631, as amended). Any downloading and reproduction for further dissemination of all or part of the documentation, without the consent of Aluprof S.A. is illegal and will result in criminal and civil liability

General recommendations

Roller shutter installation can only be performed by a trained installation team. It is necessary to comply with occupational health and safety regulations, in particular concerning the safety of electrical equipment and work at heights.

It is necessary to use the following for the installation:

- a) If the installation is performed to the reinforced concrete lintel or on a solid brick – use rawl plugs Ø 6+8 mm
- b) If the installation is performed to a wall made of interstice materials – use suitable installation systems for this type of walls.
- c) If the installation is performed to the walls made of cavity brick or aerated concrete, etc. – use plugs for cavity brick.

Installation conditions:

- a) For walls – perform an installation to even surfaces of a proper durability, made in accordance with effective regulations of Building Law.
- b) For metal constructions – perform an installation to materials with a proper thickness of walls, joined with one another in accordance with effective rules of metalworking.

NOTE: Installation methods presented in the instruction are exemplary.

1. Installation tools [1].



2. Unpacking the roller shutter

Before the installation it is necessary to unpack the item and check its quantity and quality.

a) Shutter box [2], guide channels [3], side locks to mask screws in guide channels [4].



b) Types of manual overrides used (options):



Outside strap box coiler,
roll strap guide, strap grip [5].



Outside rope box coiler,
rope guide, rope grip [6].



Winch for strap, angle for rope and strap
winch, tubular strap guide, handle [7].



Winch for rope, angle for rope and strap
winch, rope guide, handle [8].



Handle, Cardan joint 45° or 90°
with hook for Cardan joint [9].



Handle, Cardan joint 45° or 90°
with eye [10].

I ROLLER SHUTTER UNDER PLASTER SP-E SYSTEM

Order of installation

- a) Check dimensions of the building opening [11], [12].



- b) Mark the point for drilling the hole for manual override strap or rope (about 17mm above the guide channel edge) [13], then drill the hole [14].

- for strap – with drill $\varnothing 20 \div 22$ mm (put the installation tube $\varnothing 20 \div 22$ mm and cut it evenly to the wall at the inside as well as the outside of the room)
- for rope – with drill $\varnothing 10 \div 13$ mm (put the spring - rope guide into the drilled hole) and adjust its length to the thickness of the wall.

In case of electric driving system, drill the hole for the motor wire in the point where electric wiring system is to be installed.



- c) Put the roller shutter against the ground [15], set guide channels vertically and fix them with screws to the window frame [16].



d) Unscrew the screws [17], [18] and open the shutter box revision flap [19].



e) Lower the roller shutter curtain to the window sill. Put the strap (rope) through the hole into the room [20]. In case of a roller shutter with electric driving system, it is necessary to additionally regulate the limit switches (with the use of mounting wire) and then connect the controlling elements in accordance with installation instruction (for driving system, control unit, controller, etc.). Lead the power cord in accordance with wiring system installation plan.



f) Using screws [23], install the strap (rope) guide [22] on the inside at the hole outlet [21]



- g) Take out the pins [24] and open the coiler [25] by levering up one side of the casing. Using screws, fix the coiler to the window frame [26]. Attach the strap (rope) to the hook by firmly holding the spring enclosure, turn and release the lock [27]. At the installed coiler and lowered curtain, the drum of the spring needs 2-3 coils of strap / rope [28]. Close the coiler casing [29].



- h) Check if all connections are made properly.
i) Test the roller shutter operation to check if it works.
j) Close [30] and fix the roller shutter box revision flap [31], [32].



- k) Take off the protective foil of the shutter box [33], guide channels [34] and other elements.
- Plug the holes in guide channels [35].



- l) Train the user in operation of the roller shutter.
m) Hand over the manual and maintenance instruction and warranty card to the user; sign the acceptance protocol.

II ROLLER SHUTTER UNDER PLASTER SP-E SYSTEM WITH MOSKITO

Order of installation.

- a) Check dimensions of the building opening [36], [37].



- b) Mark the point for drilling the hole for manual override strap or rope (about 17mm above the guide channel edge) [38], then drill the hole [39].

- for strap – with drill $\varnothing 20 \div 22$ mm (put the installation tube $\varnothing 20 \div 22$ mm and cut it evenly to the wall at the inside as well as the outside of the room)
- for rope – with drill $\varnothing 10 \div 13$ mm (put the spring - rope guide into the drilled hole) and adjust its length to the thickness of the wall.

In case of electric driving system, drill the hole for the motor wire in the point where electric wiring system is to be installed.



- c) Put the roller shutter against the ground [40], set guide channels vertically and fix them with screws to the window frame [41].



d) Unscrew the screws [42], [43] and open the shutter box revision flap [44].



e) Lower the roller shutter curtain to the window sill. Put the strap (rope) through the hole into the room [45]. In case of a roller shutter with electric driving system, it is necessary to additionally regulate the limit switches (with the use of mounting wire) and then connect the controlling elements in accordance with installation instruction (for driving system, control unit, controller, etc.). Lead the power cord in accordance with wiring system installation plan.



f) Using screws [48], install the strap (rope) guide [47] on the inside at the hole outlet [46]



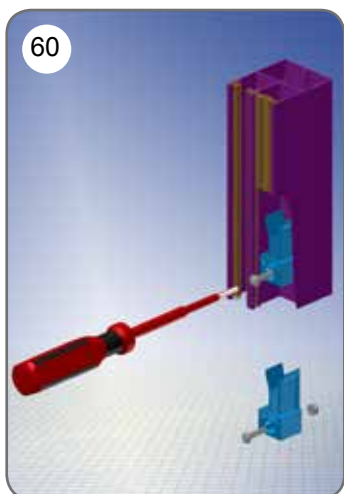
- g) Take out the pins [49] and open the coiler [50] by levering up one side of the casing. Using screws, fix the coiler to the window frame [51]. Attach the strap (rope) to the hook by firmly holding the spring enclosure, turn and release the lock [52]. At the installed coiler and lowered curtain, the drum of the spring needs 2-3 coils of strap / rope [53]. Close the coiler casing [54].



- h) Check if all connections are made properly.
i) Test the roller shutter operation to check if it works.
j) Close [30] and fix the roller shutter box revision flap [56], [57].



- k) Close the insect screen in such a position to enable sealing the endslat and window frame with brush (side) [58]. Then mark (at the opposite side of the window) the position of insect screen's endslat [59]. Position the seating of side lock at the proper height (in each guide channel) and then tighten it with required force [60], [61]. Lower the insect screen and check if the area between the endslat and window frame is sealed with brush [62].



- l) After plastering take off the protective foil of the shutter box [63], guide channels [64] and other elements. Plug the holes in guide channels [65].



- m) Train the user in operation of the roller shutter.
 n) Hand over the manual and maintenance instruction and warranty card to the user and sign the acceptance protocol.



Headquarters; Plant in Bielsko-Biała

ul. Warszawska 153, 43-300 Bielsko-Biała, Polska
tel. +48 33 81 95 300, fax +48 33 82 20 512

Production plant in Opole

ul. Gostawicka 3, 45-446 Opole, Polska
tel. +48 77 40 00 000, fax +48 77 40 00 006
e-mail: aluprof@aluprof.eu



PN-EN 13659